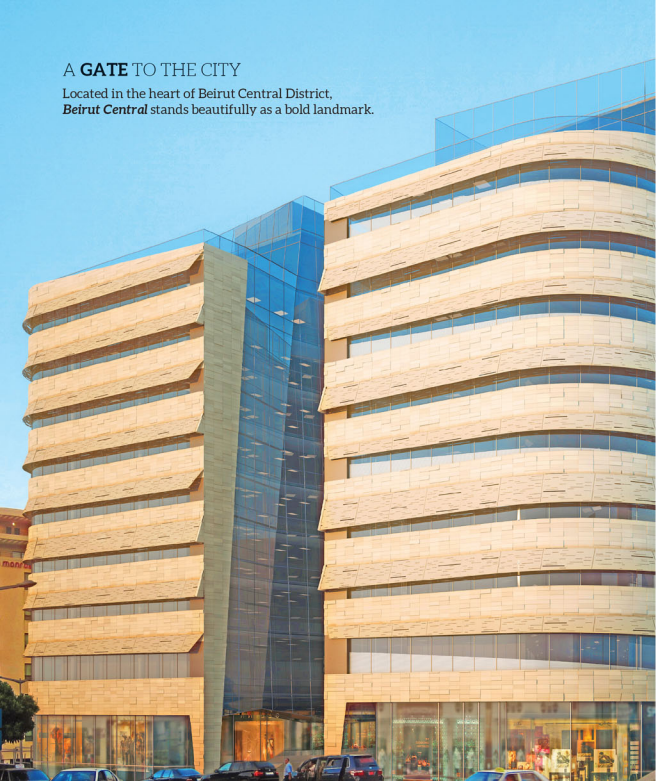




LUXURIOUS OFFICES,
RETAIL & RESTAURANTS

A **GATE** TO THE CITY

Located in the heart of Beirut Central District,
Beirut Central stands beautifully as a bold landmark.



DEVELOPER



ARCHITECT

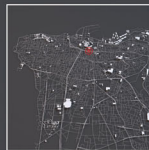
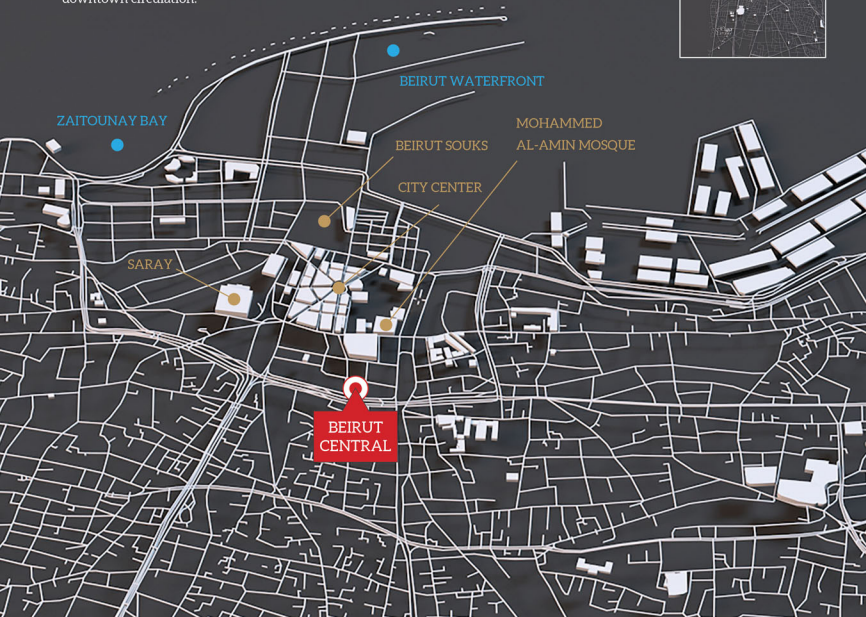


“THERE IS
NO QUESTION THAT
**THE OBJECTS
THAT SURROUND US**
IMPACT OUR EXPERIENCE
OF THE WORLD”

Katherine Center



The new development, is located right on the border between Solidere and Fouad Chehab highway; which allows it to be effortlessly accessed while still avoiding downtown circulation.



Rising from the heart of the capital, is a bold structure destined to gratify its surroundings with an imposing façade and soothing green areas. Meticulously designed and laid out to ensure natural light, illuminating its spaces. The monument creates an environment of both sophistication and character.



Blending in Beirut's central district the place is surrounded by a melting pot of retail stores, pedestrian zones and landmarks. The area is famous for its brilliant landscapes and vibrant commercial spaces.

Happily, with less traffic than the inner downtown, one could say the site will be an oasis of palatial calm, whilst nonetheless still playing host to a vibrant culture and a stimulating throng of people.

**“A BOLD LANDMARK
WITH AN UNPARALLELED
LOCATION”**

“STRATEGICALLY LOCATED
MINUTES AWAY FROM
BEIRUT’S RENOWNED
WATERFRONT”



The three buildings are interconnected with bridges and create an oasis of leisure.

Putting occupants' needs first, Beirut Central offers a green public space to add that extra high level of comfort.

It offers occupants a sense of community and oneness, and allow them to get away from the bustle of the day and relax whenever needed.



The project's radical design blends well in the capital city, yet stands out as a progressive complex with its mix of stone, glass and metal.





“A SHOPPING AND
RECREATIONAL
GREEN HAVEN”



Beirut Central is home to a 3,377 sqm of retail space that sit within the spacious 3 blocks, offering occupants and visitors 2 ground floors with luxury designer boutiques. The space between the buildings have many walking paths and green mini gardens. Different restaurants welcome shoppers, visitors and occupants who are looking for a delectable meal or wanting to enjoy a break over a drink.





“BEIRUT CENTRAL OFFERS
21,000 SQUARE METERS OF
UPCOMING OFFICES”

Worked by the renowned two-time award-winning French architect and urbanist **Christian de Portzamparc**, the architecture takes as its inspiration the rich heritage of the area, creating well-designed luxury spaces that both reflect the capital's history. Beirut Central offers advanced specifications for a modern lifestyle and includes an abundance of parking spaces while still having a fair amount of green areas.

Covering 25,000 square meters of available space over five stories, Beirut Central offers **21,000 square meters of upcoming offices** and **3,500 square meters of future retail stores and services**. From ground floors to rooftops the space is designed to adapt to a wide range of activities.



the Artistic side of Beirut Central

Constituted of three complementary structures, with exuberant curves, a spirit of the old, and a high quality of construction; it produces an amazing touch of elegance that is carried from the exterior throughout all interior spaces.



“**LANDMARK BUILDINGS** OFTEN BECOME
URBAN BENCHMARKS OR SYMBOLS
THAT **DRAW AN AREA TOGETHER**
TO CREATE A POLE WITHIN
THE LARGER URBAN LANDSCAPE.”

BEIRUT CENTRAL'S ARCHITECT PORTRAIT

Christian de Portzamparc is the first French architect to gain the prestigious Pritzker Architecture Prize at the age of 50.

He has been made "Commandeur des Arts et des Lettres", "Officier de l'Ordre du Mérite" and "Chevalier de l'Ordre de la Légion d'Honneur", and was awarded the "Grand Prix d'Architecture de la Ville de Paris" in 1990, the "Médaille d'Argent" in 1992 and the "Grand Prix National d'Architecture" in 1998. He has also been appointed an Honorary Fellow of the American Institute of Architects (A.I.A.). The most prestigious city planning prize in France, "Grand Prix de l'Urbanisme", was awarded to him in 2004.

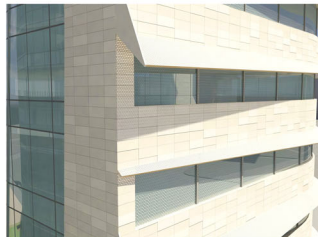
In 2006, the "Collège de France" created a 53rd chair dedicated to "artistic creation", **Christian de Portzamparc** was its first holder.

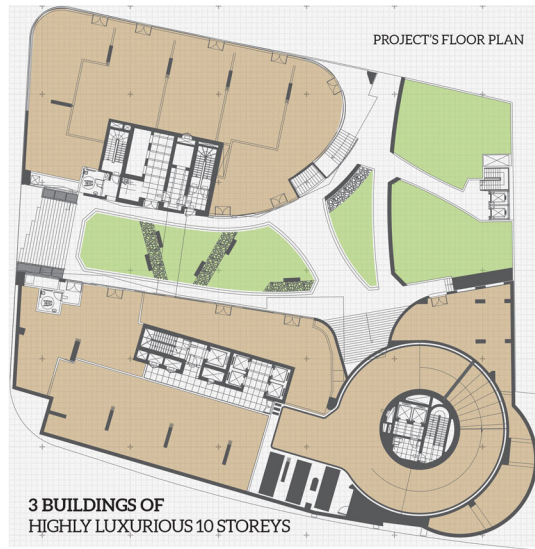


*Irregular solar shadings
create a soulful canvas of
light and shadows*

Beirut Central is built with state-of-the-art materials. The yellow stone facade of the buildings enmeshed with glass and metal, gives the project a unique design.

The highly luxurious offices' interiors have been well-thought of. A combination of quality and an astute attention to details in mind, creates a greatly aesthetic office space that embodies the spirit of breakthrough companies.



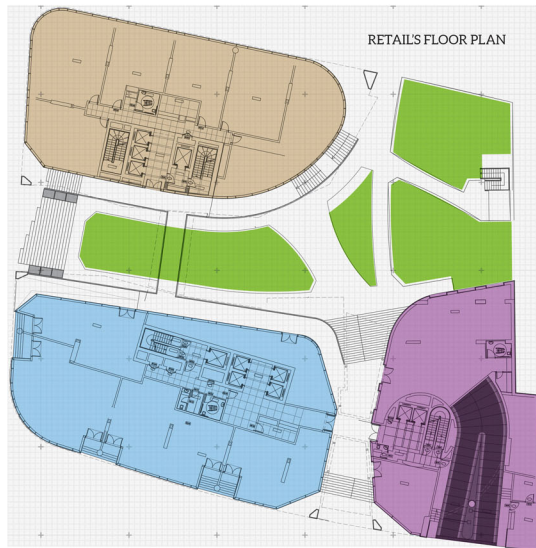


**3 BUILDINGS OF
HIGHLY LUXURIOUS 10 STOREYS**

- 10 Storey
Offices
- Restaurants
& Services
- Rooftops
(1,320 sqm)
- 2 Retail
Floors
- 5 Basements
(390 Parkings)
- Terraces
(849 sqm)

“GRAND
RECEPTION AREA
BEAUTIFULLY
DESIGNED”





**3 BUILDINGS EACH
2 GROUND FLOORS**

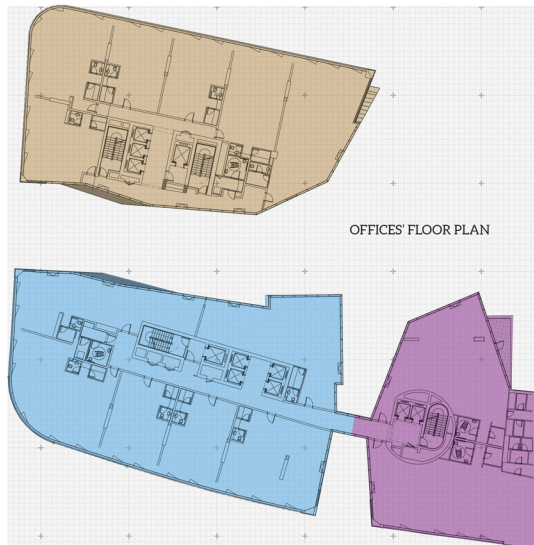
Bloc A: 1,426 sqm
(GF 1) 756 sqm
(GF 2) 670 sqm

Bloc B: 1,447 sqm
(GF 1) 714 sqm
(GF 2) 733 sqm

Bloc C: 504 sqm
(GF 1) 178 sqm
(GF 2) 326 sqm



RETAIL | 3,377 sqm



OFFICES' FLOOR PLAN

**3 BUILDINGS EACH
10 STOREY**

- | | | |
|---|--|--|
| <p>■ Bloc A: 7,056 sqm
8 Storey: 835 sqm each
1 Roof: 376 sqm</p> | <p>■ Bloc B: 7,850 sqm
8 Storey: 910 sqm each
1 Roof: 570 sqm</p> | <p>■ Bloc C: 4,390 sqm
8 Storey: 502 sqm each
1 Roof: 374 sqm</p> |
|---|--|--|



OFFICES | 19,296 sqm

BEIRUT CENTRAL

“TAILORED
INTERIOR SPACES”





TERRACES | 849 sqm

■ Bloc A: 414 sqm

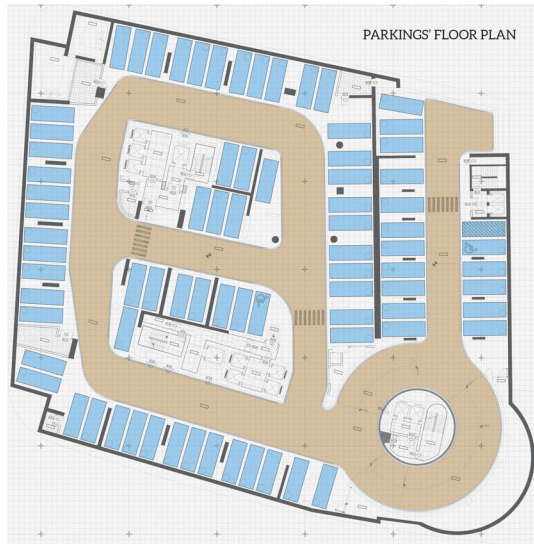
■ Bloc B: 310 sqm

■ Bloc C: 125 sqm



“AMPLE
ROOFTOP TERRACES”





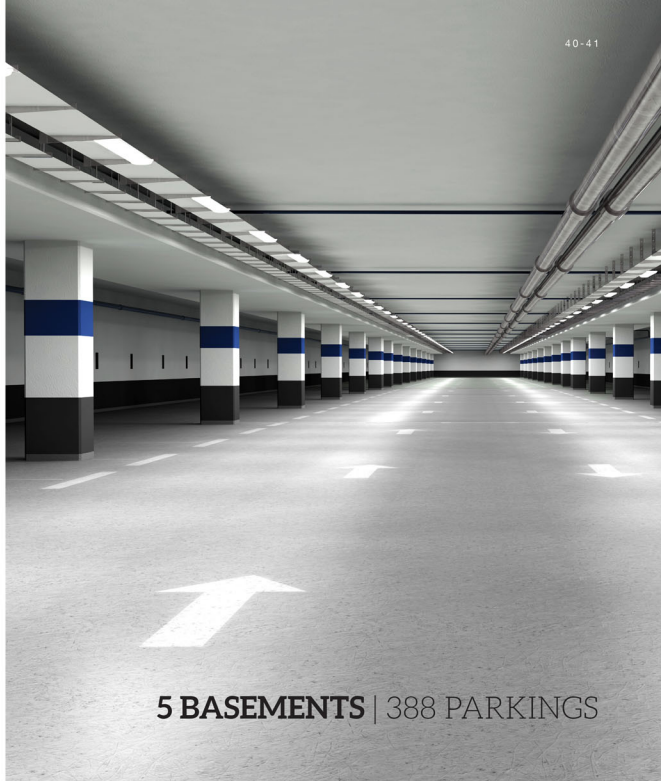
Second Basement
76 parkings

Third Basement
78 parkings

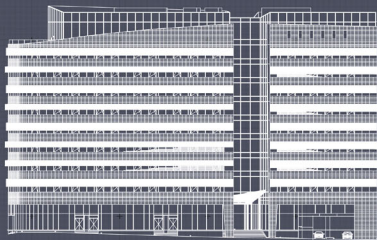
Fourth Basement
78 parkings

Fifth Basement
78 parkings

Sixth Basement
78 parkings



5 BASEMENTS | 388 PARKINGS



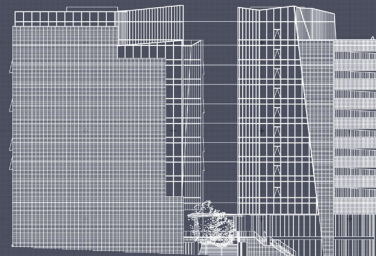
SOUTH ELEVATION



NORTH ELEVATION



WEST ELEVATION



EAST ELEVATION

BEIRUT CENTRAL

Concept & Design: JSA DESIGN™
j.s.a.merize@houseofj.s.a.com

General Housing Company
Tel. / Fax. +961 1 425 416 / 7
lebanon@ghc-intl.com
www.ghc-intl.com

